
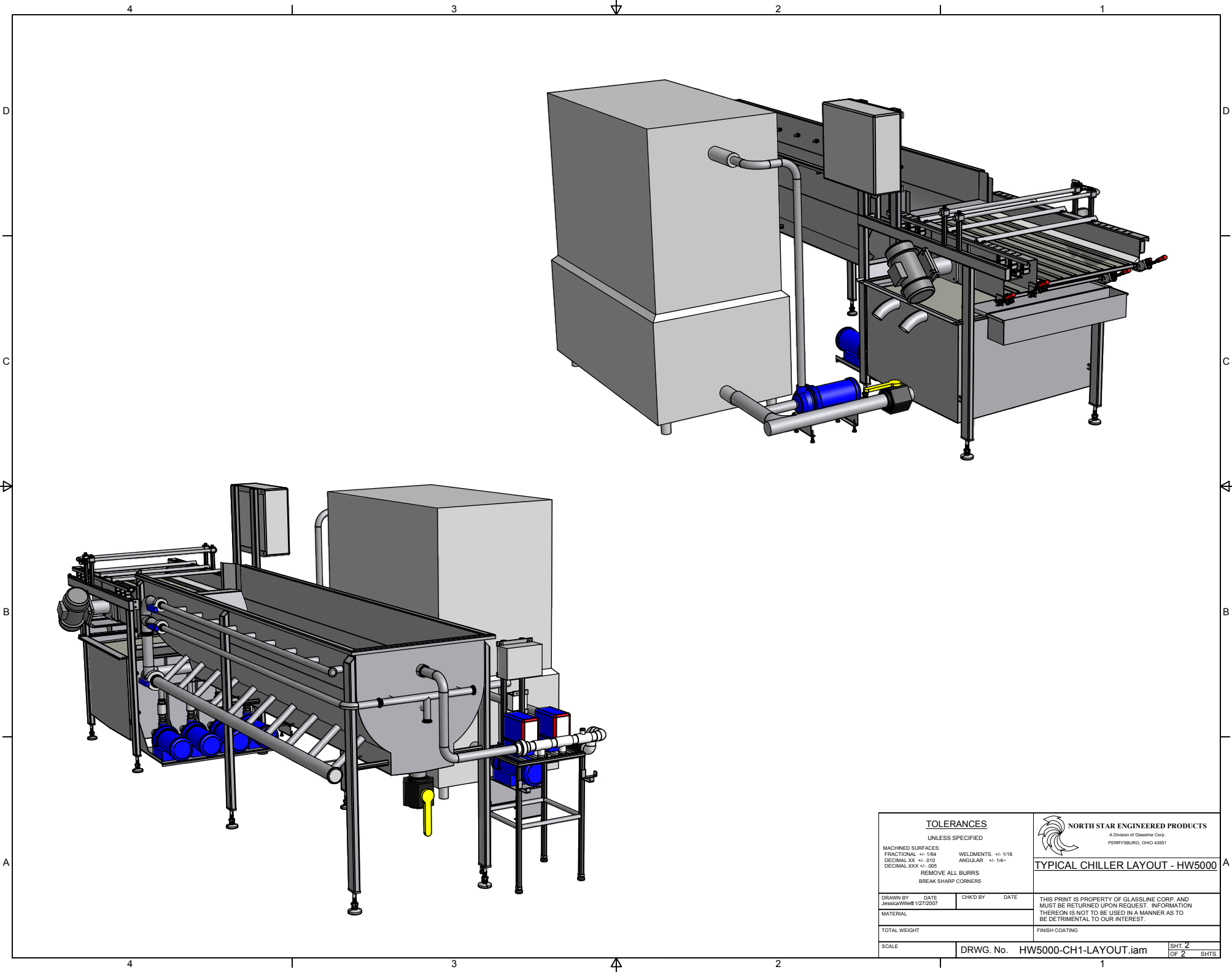



NOTES:  
 PUMPS HAVE 2" FPT INLETS AND 1-1/2" FPT OUTLETS  
 ALL UNMARKED CHILLER CONNECTIONS ARE 3" MPT

<b>TOLERANCES</b> UNLESS SPECIFIED MACHINED SURFACES: FRACTIONAL +/- .164 DECIMAL XX +/- .010 DECIMAL XXX +/- .005 REMOVE ALL BURRS BREAK SHARP CORNERS		 <b>NORTH STAR ENGINEERED PRODUCTS</b> A Division of Glassline Corp. PERRYSBURG, OHIO 43051
DRAWN BY DATE Jessica Willett 1/27/2007		
CHKD BY DATE		<b>TYPICAL CHILLER LAYOUT - HW5000</b> THIS PRINT IS PROPERTY OF GLASSLINE CORP. AND MUST BE RETURNED UPON REQUEST. INFORMATION THEREON IS NOT TO BE USED IN A MANNER AS TO BE DETRIMENTAL TO OUR INTEREST.
MATERIAL		
TOTAL WEIGHT		FINISH COATING
SCALE		DRWG. No. HW5000-CH1-LAYOUT.iam
SHT. 1 OF 2 SHTS.		SHT. 1 OF 2 SHTS.



<p align="center"><b>TOLERANCES</b> UNLESS SPECIFIED</p> <p>MACHINED SURFACES: FRACTIONAL +/- 1/64      WELDMENTS +/- 1/16          DECIMAL XX +/- 0.10      ANGULAR +/- 1/4"          DECIMAL XXX +/- .005          REMOVE ALL BURRS          BREAK SHARP CORNERS</p>		 <p><b>NORTH STAR ENGINEERED PRODUCTS</b>          A Division of Glassline Corp.          PERRYSBURG, OHIO 43051</p>
<p align="center"><b>TYPICAL CHILLER LAYOUT - HW5000</b></p>		
DRAWN BY    DATE Jessica Willett 1/27/2007	CHKD BY    DATE	<p>THIS PRINT IS PROPERTY OF GLASSLINE CORP. AND MUST BE RETURNED UPON REQUEST. INFORMATION THEREON IS NOT TO BE USED IN A MANNER AS TO BE DETRIMENTAL TO OUR INTEREST.</p>
MATERIAL		
TOTAL WEIGHT		
SCALE		FINISH COATING
DRWG. No. HW5000-CH1-LAYOUT.iam		SHT. 2 OF 2    SHTS